

INSTANA

an IBM Company

Enterprise Observability

Instana, an IBM Company, is the only fully automated observability solution purpose built to collect and store 100% of distributed traces without any sampling while automatically correlating all components in real-time.

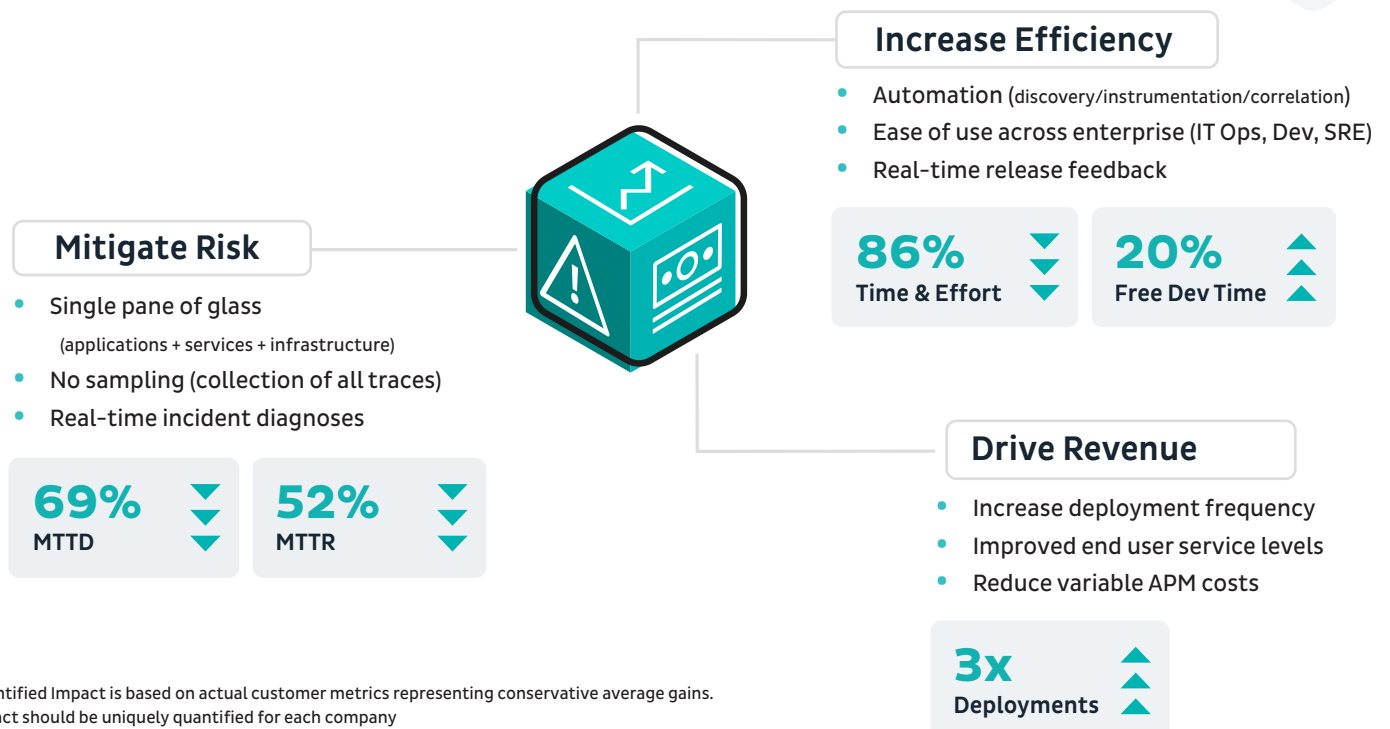
Instana automatically collects and correlates Traces, Metrics, & Logs every second from monitored applications, services, and infrastructure across the enterprise to identify issues within seconds and immediately take action.

Instana's single agent supports over 300 technologies (with source code level visibility of 14 different languages) providing end-to-end observability from mobile to mainframe.

[Click here for Supported Technologies](#)

(e.g. AWS, OpenShift, z/OS, DB2, MQ, VSAM, Websphere, on-prem, cloud, distributed, mobile, middleware, etc...)

Instana delivers real impact & instant time to value

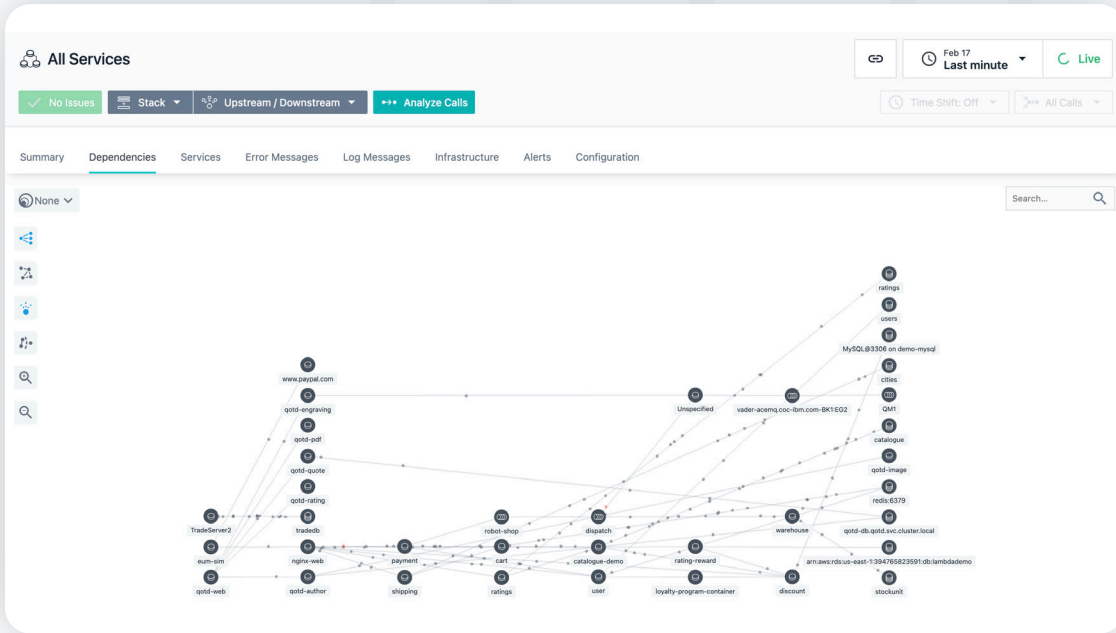


* Quantified Impact is based on actual customer metrics representing conservative average gains. Impact should be uniquely quantified for each company

What's automated? Everything!

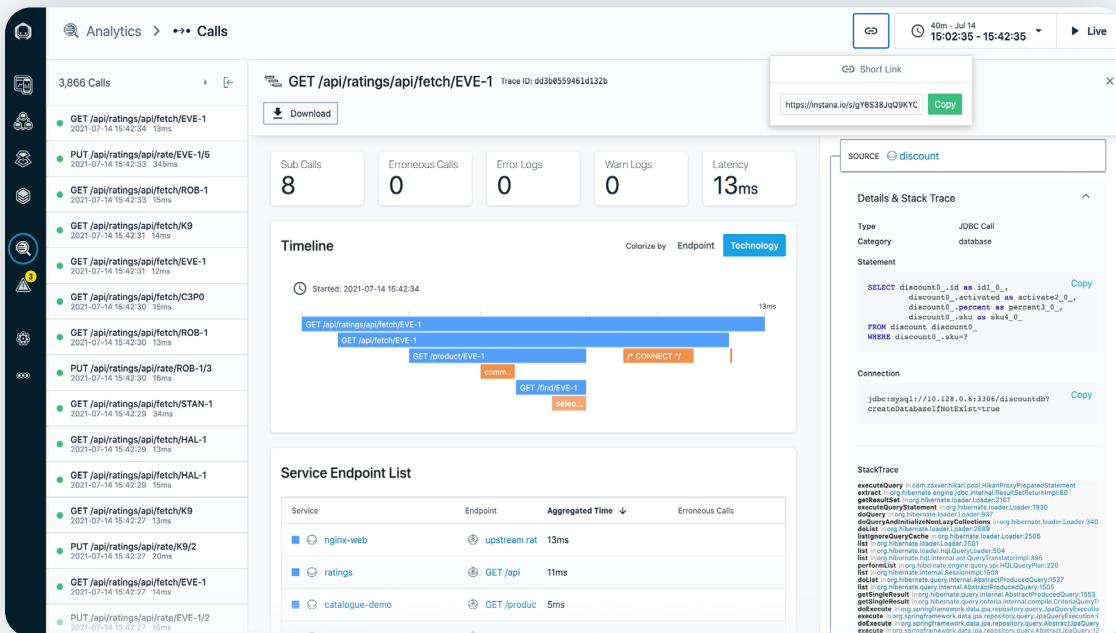
Discovery • Deployment • Configuration • Instrumentation • Mapping • Correlation • Monitoring
Tracing • Profiling • Alerting • Dashboards • RCA • Remediation • Change Detection

Insta continuously discovers and maps all services, ingests observability metrics, traces each request, profiles every process, and correlates all application dependencies - automatically.



Why a no sampling approach to tracing?

Insta collects a distributed trace for EVERY application call, showing the components, timings, & correlations. Without every trace you run a high risk of missing critical data.



How we compare to other solutions (Instana #1)

[Click here for RANKING THE OBSERVABILITY OFFERINGS by APM Experts](#)

Capabilities	AppDynamics	Datadog	Dynatrace	Instana	New Relic	Splunk
Comprehensive Log Collection	○	◐	◐	◐	◐	●
Comprehensive Metric Collection	◐	◐	◐	◐	◐	◐
Comprehensive Tracing Collection	◐	●	●	●	●	◐
Comprehensive Topology and Dependency Collection	◐	◐	◐	●	◐	○
Comprehensive and Continuous Profiling	○	●	●	●	○	●
Automated and Instant Instrumentation	○	○	●	●	○	○
High Cardinality Analytics	○	◐	◐	◐	◐	◐
AI Based Root Cause across all Data Types and Relationships	◐	◐	◐	●	◐	◐
Automated Problem Resolution	◐	○	◐	◐	○	○
Deployment	SaaS & On Prem	SaaS Only	SaaS & Managed On Prem	SaaS & On Prem options	SaaS Only	SaaS only for Observability

● - Strongly Differentiated Capability
 ◐ - Average Value
 ○ - Feature or benefit not present
◐ - Differentiated Capability
 ◐ - Less Value than Normal

Gartner APM Magic Quadrant: 2022 Report

Quotes from Gartner:

“Designed for modern architectures: Instana APM is focused on monitoring for containerized and hybrid environments and is suitable for clients looking for an APM solution, with an emphasis on monitoring modern infrastructure.”

“IBM’s position and capacity in monitoring has substantially improved with its recent acquisitions. Instana’s roadmap now includes further integration for IBM Z Mainframe”

- Gartner



[Click here to visit Instana](#)